



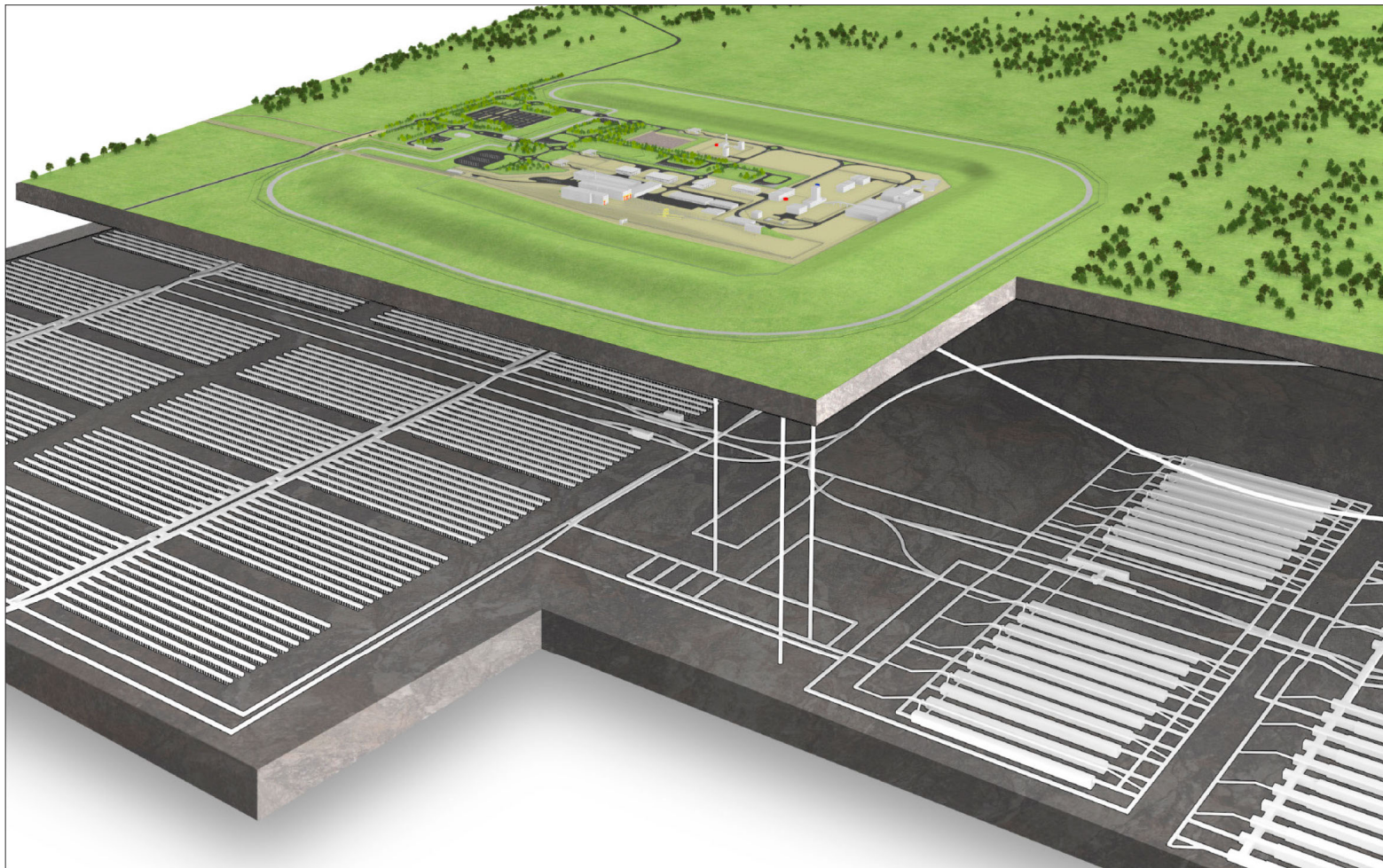
Radioactive Waste Management University Research Support Office

Introduction to the RSO

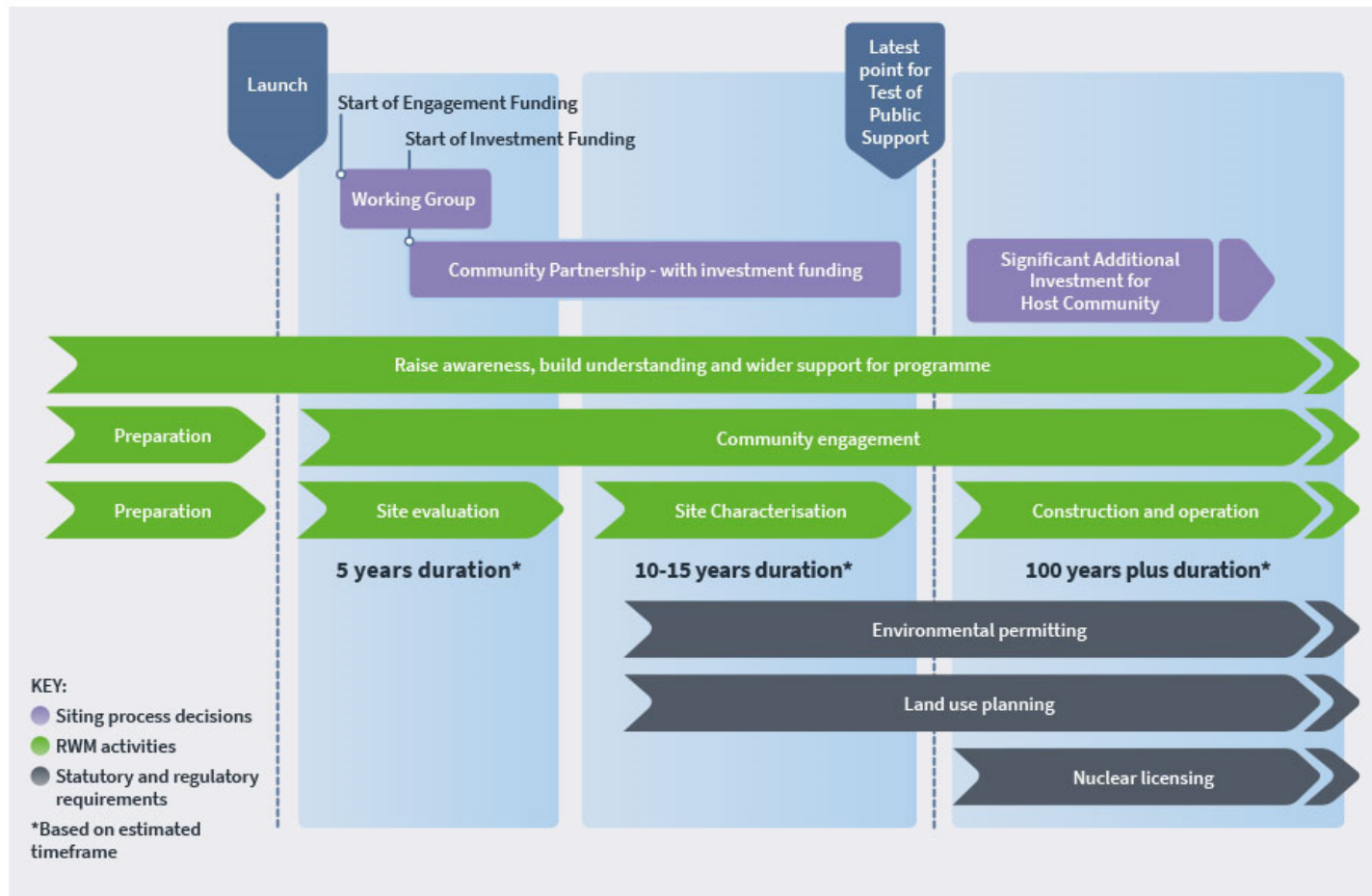
Neil Hyatt

The University of Sheffield

The challenge



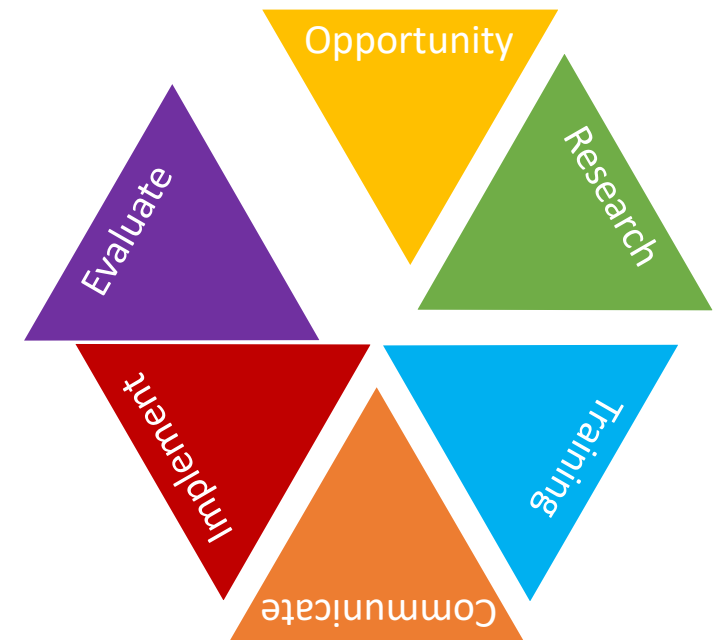
The challenge



RWM wants improve alignment of University research with its needs, with a stronger delivery focus.

A co-ordinated approach is required to:

- Co-create multidisciplinary research approaches
- Capitalise on opportunities for research funding
- Develop contextual understanding on behalf of researchers
- Train next generation subject matter experts
- Enable knowledge exchange and research implementation
- Evaluate research and related outcomes



RWM wants improve alignment of University research with its needs, with a stronger delivery focus.

A co-ordinated approach is required to:

- Co-create multidisciplinary research approaches
- Capitalise on opportunities for research funding
- Develop contextual understanding on behalf of researchers
- Train next generation subject matter experts
- Enable knowledge exchange and research implementation
- Evaluate research and related outcomes

The intention is for the RSO to support a co-ordinated approach to research delivery, fostering collaboration and synergy – not to centralise or streamline.

The RSO will therefore deliver maximum added value from funding support and give visibility to outcomes.



RSO Scope



Tender competition

ITT set out RWM wish to improve alignment of University research with its needs, with a stronger delivery focus.

- Staff anticipated to include 2 FTE with appropriate experience, e.g.
 - A manager / administrator with experience of managing collaborative research
 - An individual with experience of securing leveraged funding and research leadership
- RWM will appoint an individual to act as Head of the RSO
- Host organisation to provide physical office space
- Reimbursement of pre-approved travel
- Quarterly review of progress against agreed project plan

Fixed price contract for 5 + 3 + 2 years, annual estimated contract value of £500,000.

Invitation to Tender

Description: Research Support Office (2)

Tender ref: RWM167

Date: 21st June 2019

Tender competition

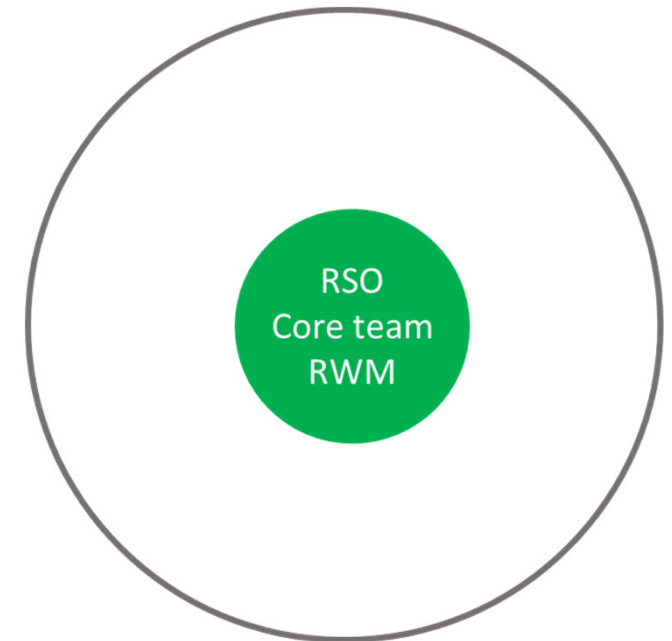
Category	Weighting, %	Questions – see ITT for full wording
Screening	n/a	Provide examples of collaborative research projects
Management	2	Describe the management arrangements
Approach	28	Questions relating to the four tasks – does the proposed approach give confidence...
Team and experience	20	Describe expertise and experience of the proposed team
Security	Pass/Fail	Cyber essentials
Awareness	10	Demonstrate understanding of the broad research landscape
Leveraging	7	Identify how leverage will be achieved
Innovation	3	Demonstrate innovative solutions to problems
Price	30	Complete cost schedule

Competition timeline



RSO model

Our approach is a partnership between the Universities of Sheffield and Manchester, forming the Core Management team, together with RWM.



RSO model

Our approach is a partnership between the Universities of Sheffield and Manchester, forming the Core Management team, together with RWM.

The discipline spokes map on to RWM's core research needs and will each be led by a University or other organisation subject matter expert – **Discipline Leads**.



Our approach is a partnership between the Universities of Sheffield and Manchester, forming the Core Management team, together with RWM.

The discipline spokes map on to RWM's core research needs and will each be led by a University or other organisation subject matter expert – **Discipline Leads**.

The RSO and discipline leads will:

- Engage leading research capability
- Develop a discipline research agenda
- Foster networking and collaboration

Discipline leads will be drawn from partner universities and through open appointment (stipendiary)

Overarching commitment to openness, transparency, trust and mutual respect – essential for successful endeavour.



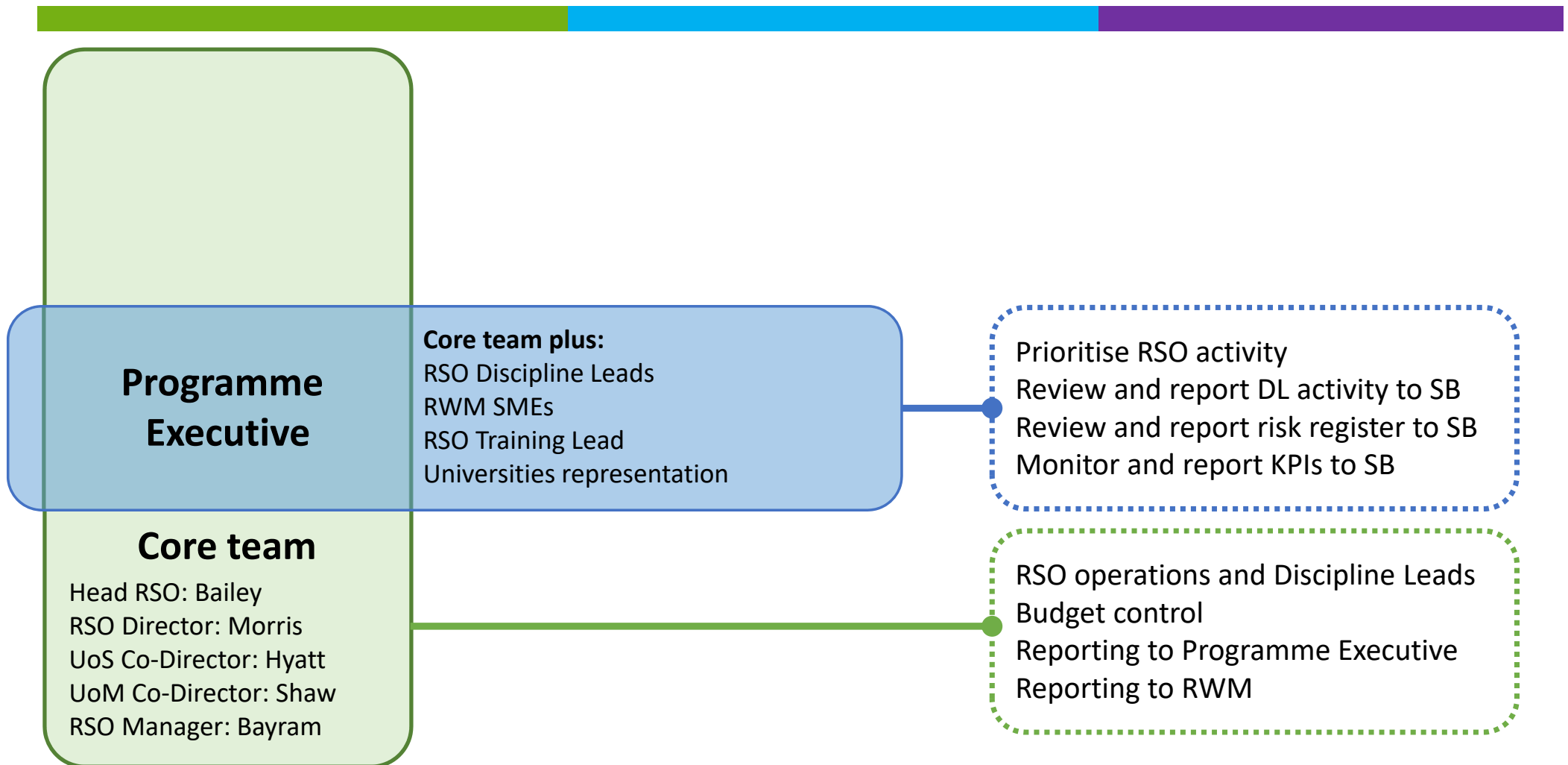
RSO management

Core team

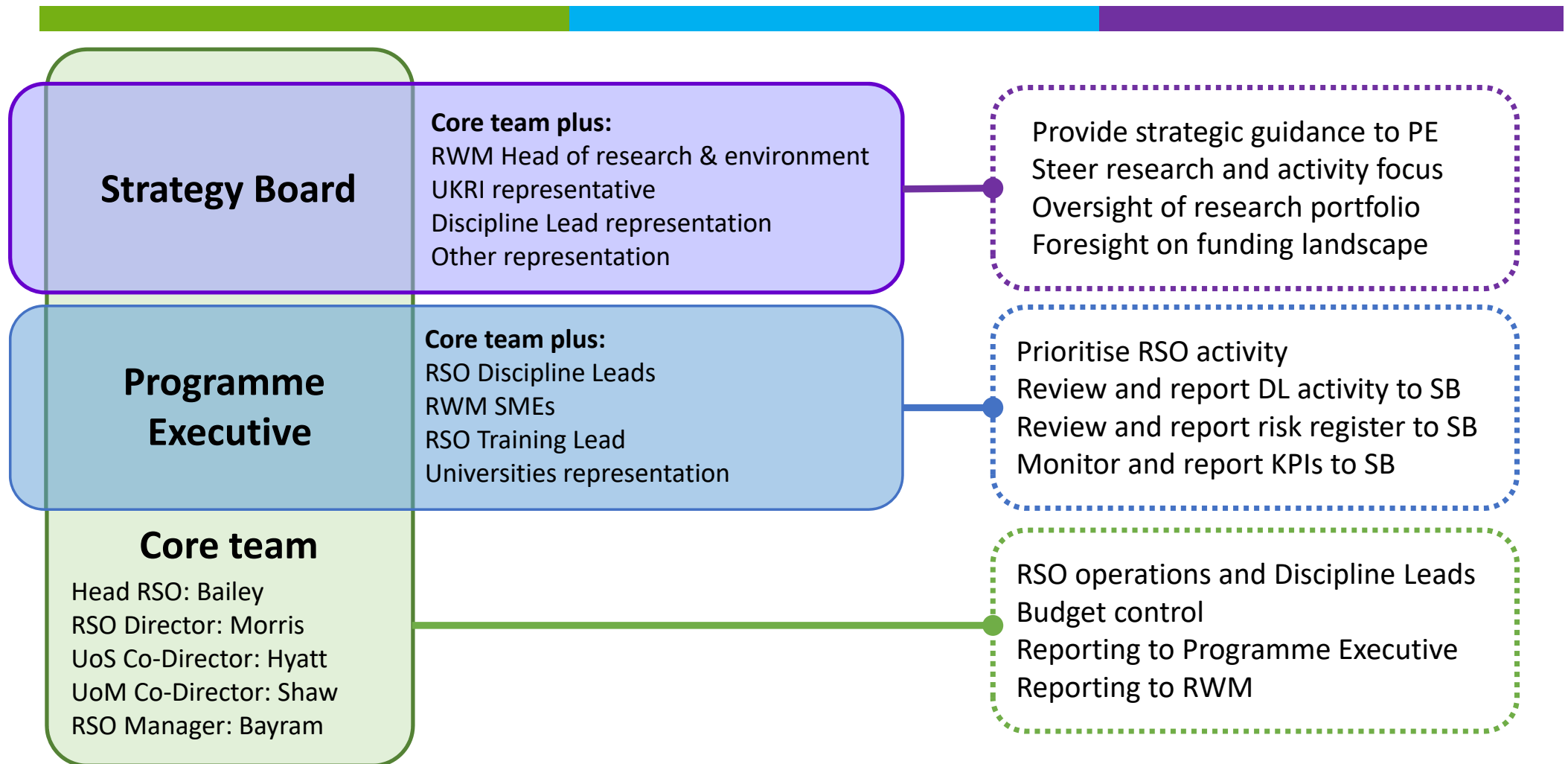
Head RSO: Bailey
RSO Director: Morris
UoS Co-Director: Hyatt
UoM Co-Director: Shaw
RSO Manager: Bayram

RSO operations and Discipline Leads
Budget control
Reporting to Programme Executive
Reporting to RWM

RSO management

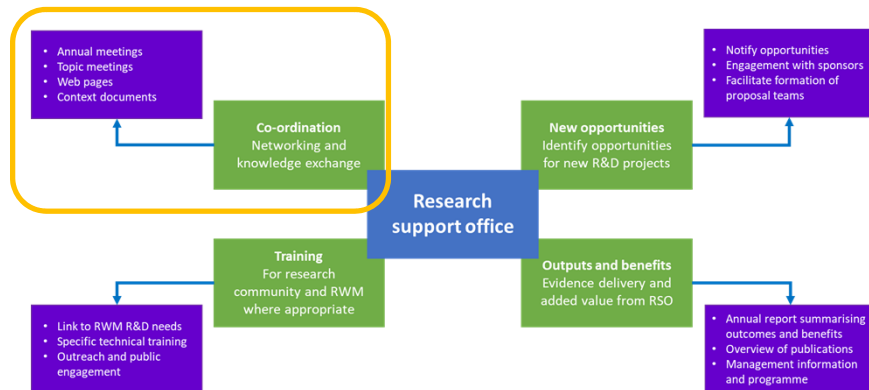


RSO management



1. Co-ordination

Aim: *to ensure project researchers understand the context of and need for their work and that there is good networking and interchange between those working on related projects.*



RSO Website to connect the research community

- Introduce RSO team, contact details, news and updates (Twitter)
- Research case studies for contextual understanding
- Information on funding calls and meetings
- Repository for annual reports, starter pack etc

Annual meeting to showcase and network research

- RWM and other sponsored researchers
- Over 3 days, location rotating around UK
- Option for biennial journal special issue

Starter pack for new projects

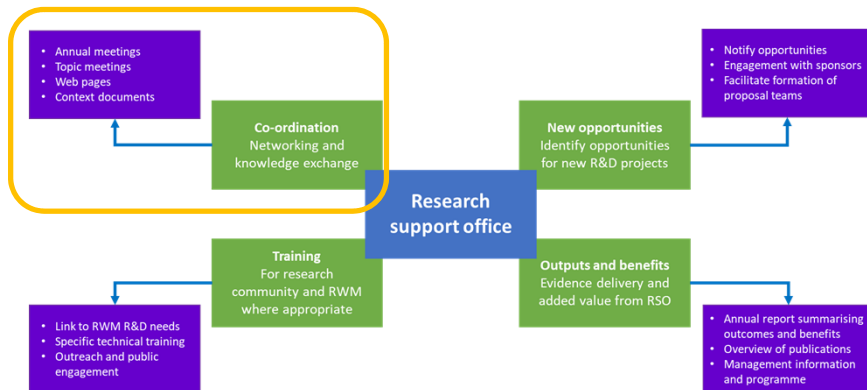
- Briefing on geological disposal programme, RWM, RSO
- Sets out roles and responsibilities of project partners
- Requirements for reporting, publication clearance etc

1. Co-ordination

Aim: *to ensure project researchers understand the context of and need for their work and that there is good networking and interchange between those working on related projects.*

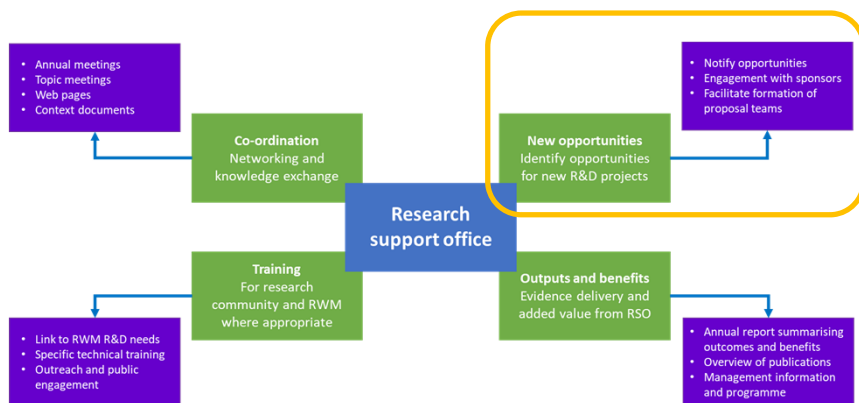
Topic meetings to develop discipline networks

- Support knowledge exchange and collaboration
- Generate new ideas and funding proposals
- Facilitated workshops, seminars etc
- Led by Discipline Leads with RWM SMEs



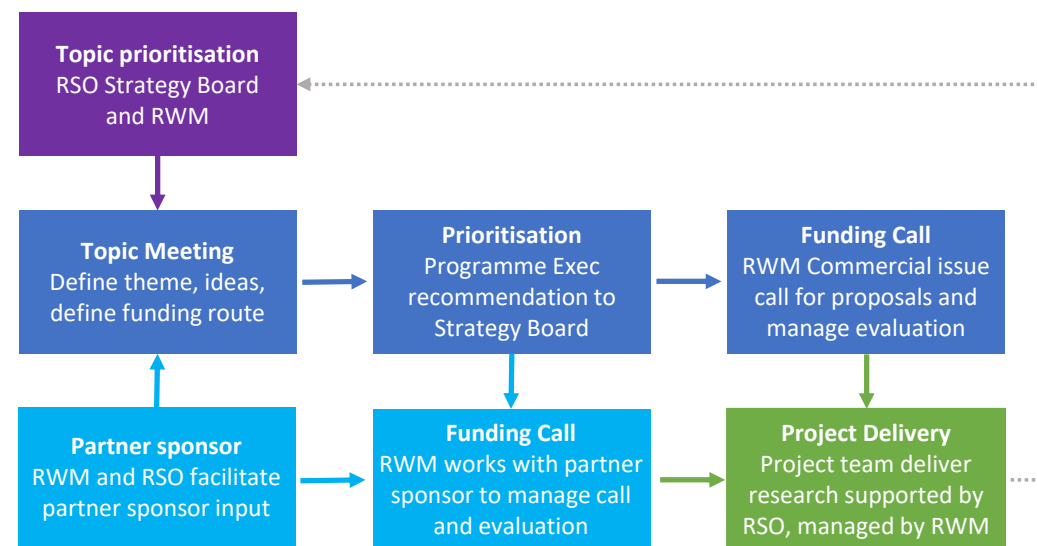
2. New opportunities

Aim: *to develop new research opportunities that will deliver understanding required to underpin geological disposal of radioactive wastes and facilitate the development of costed proposals for consideration by RWM.*



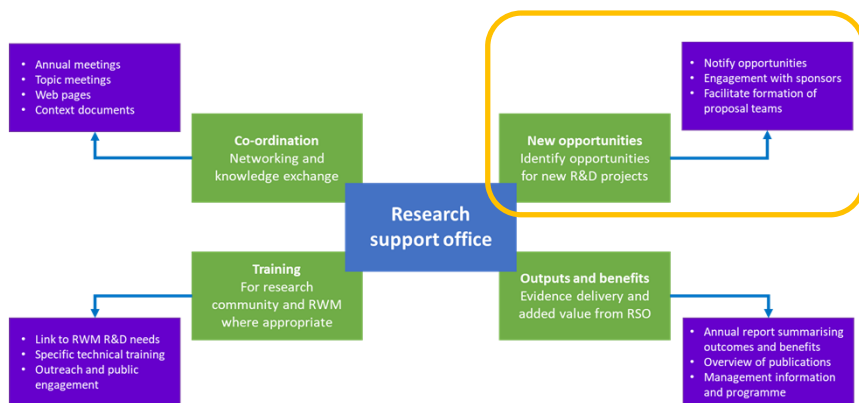
Idea generation and incubation to seed opportunities

- Discipline leads, RWM SMEs, and RSO team work together to define topic opportunities, engaging with UKRI as appropriate
- Process to generate and incubate ideas, driven through Topic Meetings / Workshops, engaging RSO network



2. New opportunities

***Aim:** to develop new research opportunities that will deliver understanding required to underpin geological disposal of radioactive wastes and facilitate the development of costed proposals for consideration by RWM.*



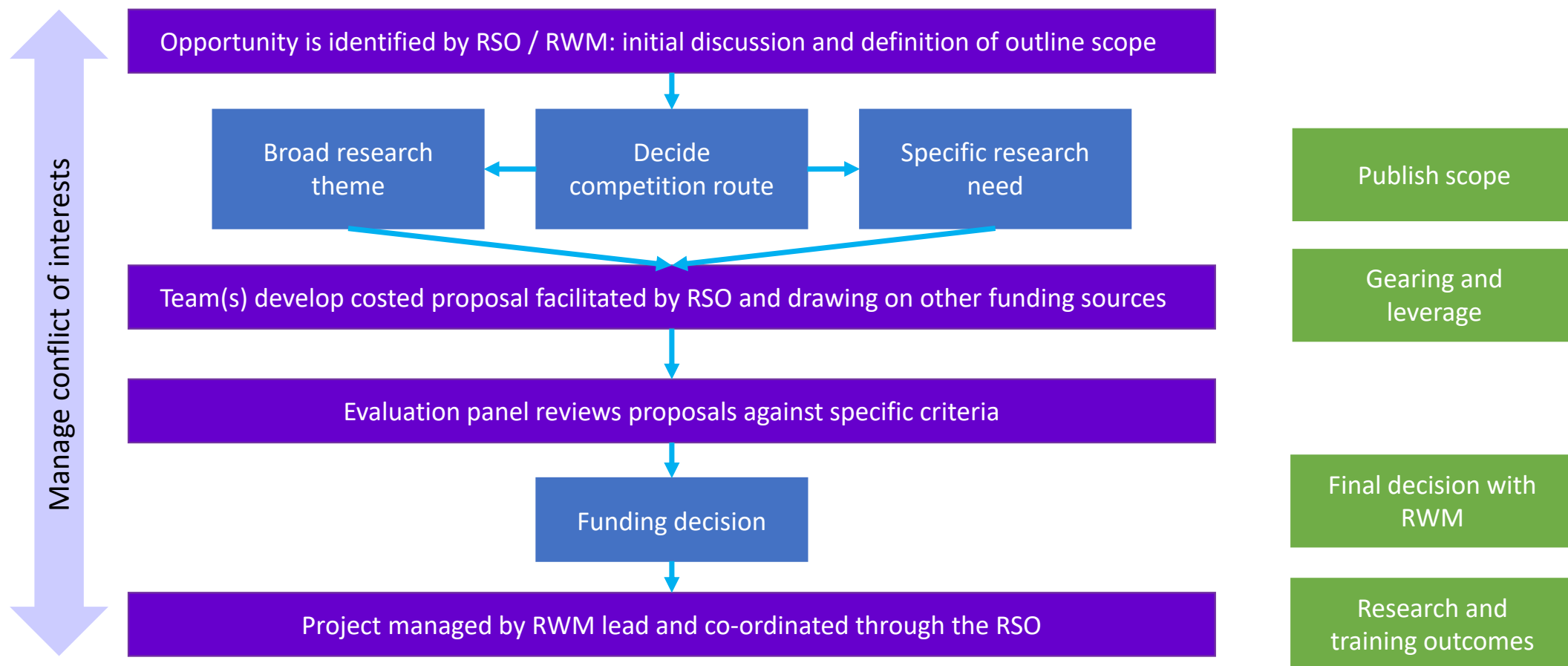
Project and funding database for new research projects

- The RSO will maintain a database of project ideas to match against future opportunities
- The RSO will maintain a database of funding opportunities and regularly update the community with new developments

Biannual funding call for new research projects

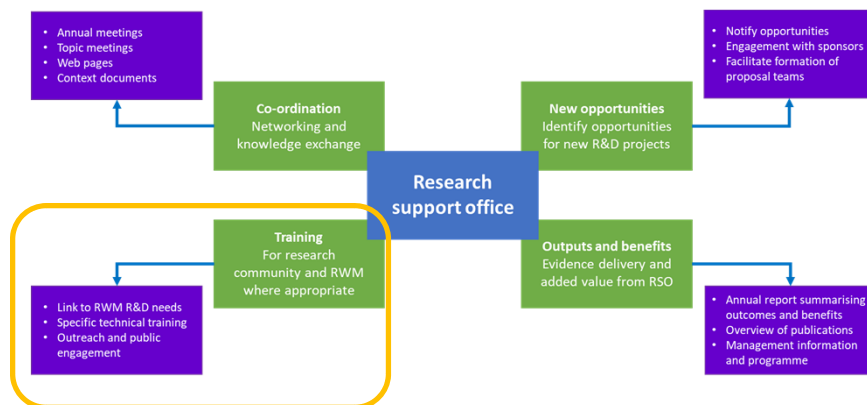
- The RSO will work with RWM to deliver a bi-annual call for funding proposals:
 - Proposals to address specific issues or broader themes where there is a clear research need
 - PhD studentships
 - Research fellowships
- RWM sponsored funding calls will be openly advertised and follow a clearly defined process

RWM funding call mechanism



3. Training

Aim: to deliver targeted training for those involved in university research projects and RWM where appropriate



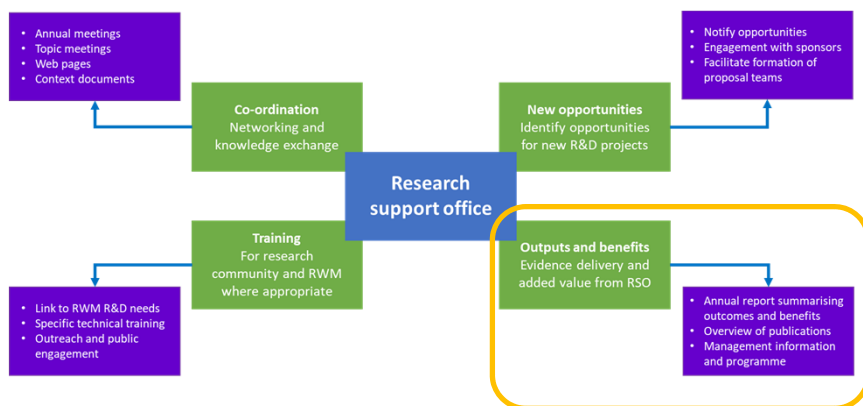
Training will be tailored to the needs of researchers, in a variety of formats, possibilities include

- Technical module delivery, e.g. nuclear fuel cycle
- Technique focused workshops, e.g. synchrotron radiation
- Skills focussed masterclasses, e.g. proposal writing
- Policy development
- Public engagement and outreach training
- Outreach activities, e.g. Cheltenham Science Festival

Activity will be led by the RSO Training Champion Prof. Sarah Heath

4. Outputs and benefits

Aim: to provide management information on RWM's university projects focusing on research outcomes, outputs and benefits



Progress reporting for RWM sponsored projects

- Light touch pro-forma; RAG coded
- Progress against milestones, key issues, risks, forward plan
- Notable outcomes and successes

Annual outcomes summary for RWM sponsored projects

- Capture key outcomes, outputs, impacts, destinations, partnerships
- Details of allied or follow on funding
- Exploring use of ResearchFish to capture data

Annual Report for RWM sponsored projects

- Serves as research showcase through case studies
- Profile research teams and individuals
- Image competition
- Celebrate outcomes, outputs, impacts and awards

In summary

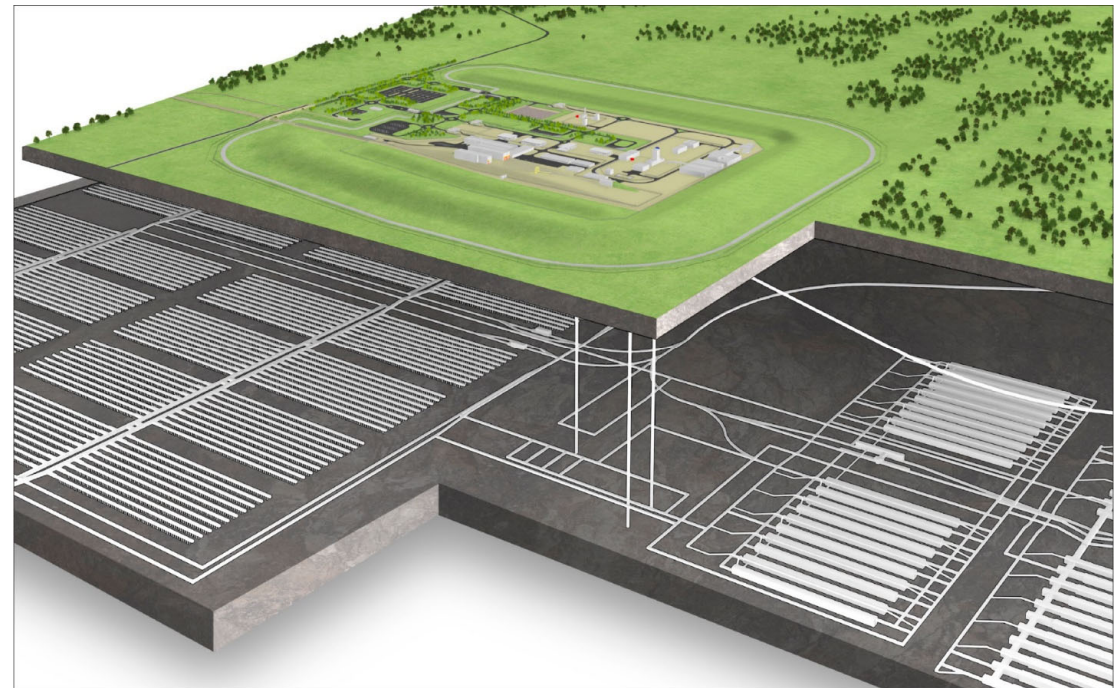
The RSO is open for business!

Our vision is to effectively coordinate and grow RWM's sponsored research portfolio, delivering research to underpin the safe, cost effective and timely disposal of radioactive wastes.

We recognise that networking, collaboration, partnership across research disciplines are essential to realise this ambition. This is at the core of our vision.

We want to stimulate a vibrant and engaged community of research practice, with a strong delivery focus, successfully leveraging allied resources.

We will be committed to engaging openly and transparently, with trust and mutual respect, to build co-ordinate and grow a research community that is inclusive and diverse.



Questions to the panel



Katherine Morris
Env Radioactivity
Academic Lead



Lucy Bailey
RWM Lead



Sam Shaw
Env Mineralogy
Manchester Lead



Neil Hyatt
Radioactive Waste
Management
Sheffield Lead

Please post any questions into the chat.

You can message the chair, Sam Shaw, directly if preferred